

# Customer Information Sheet

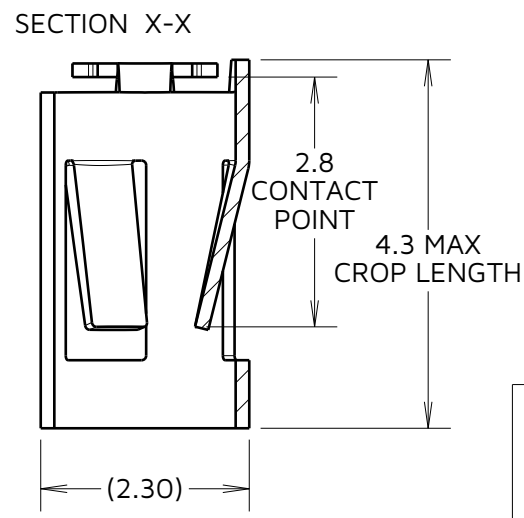
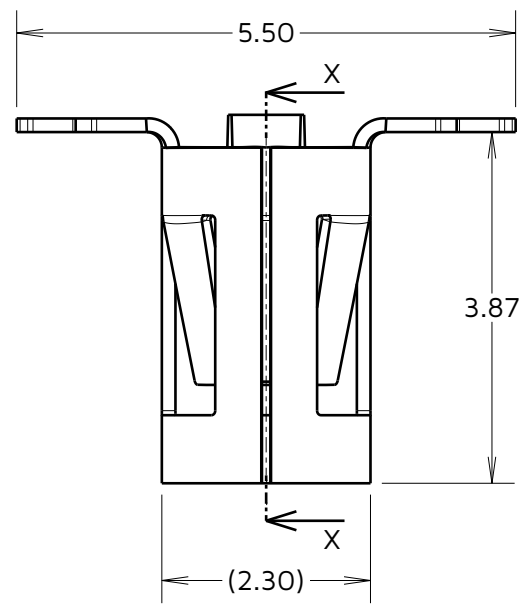
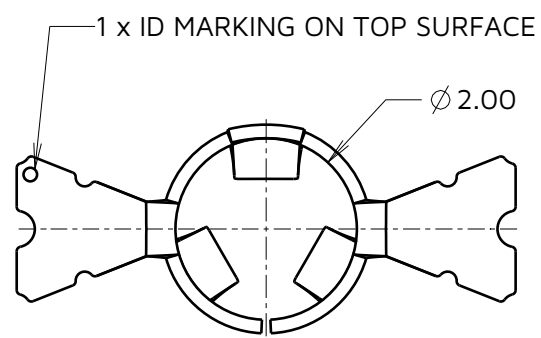
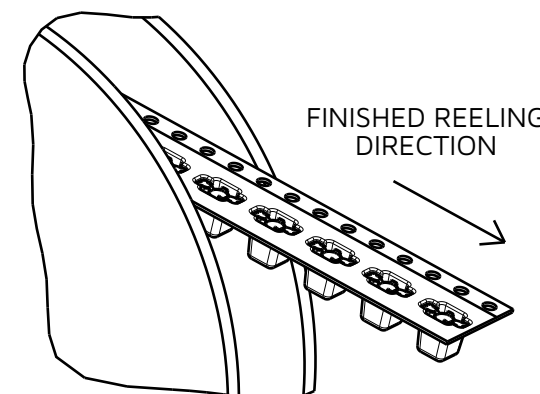
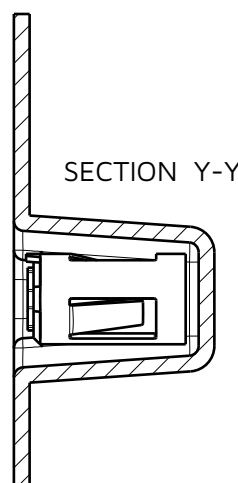
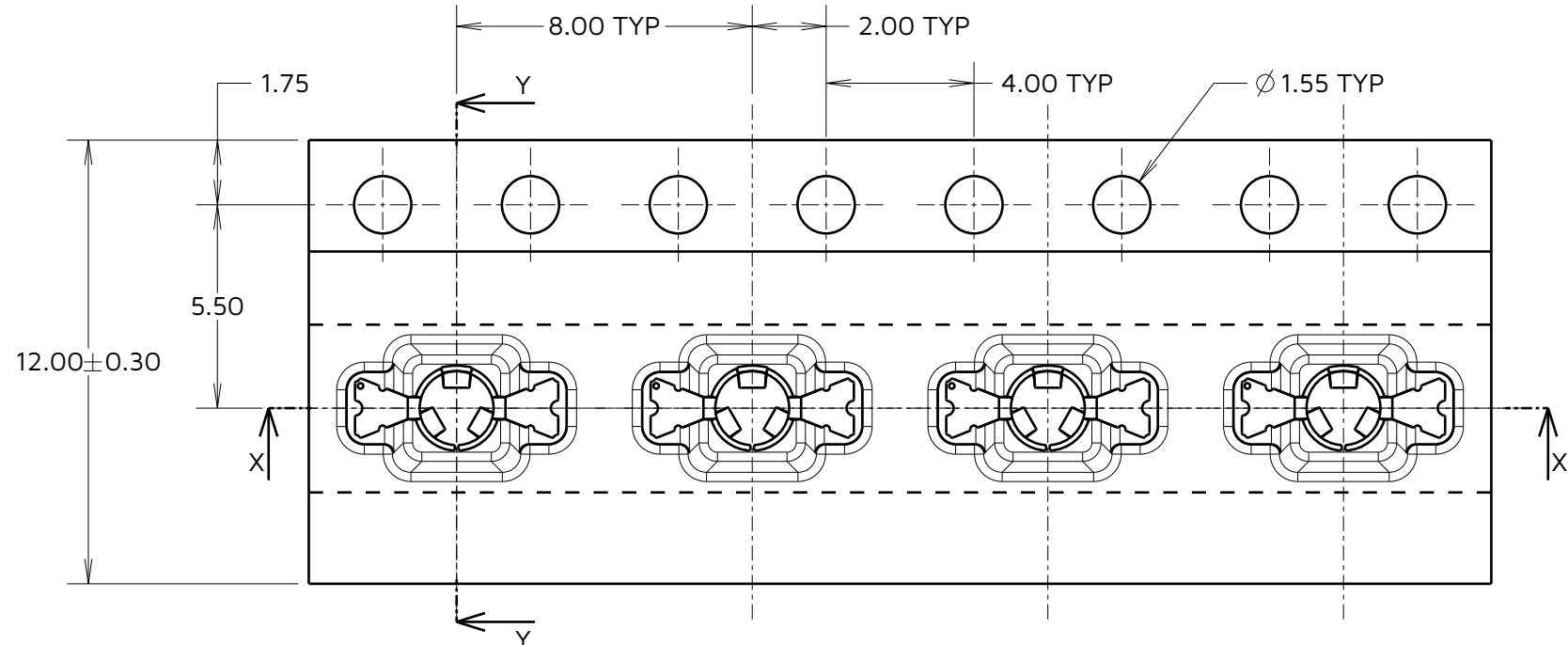
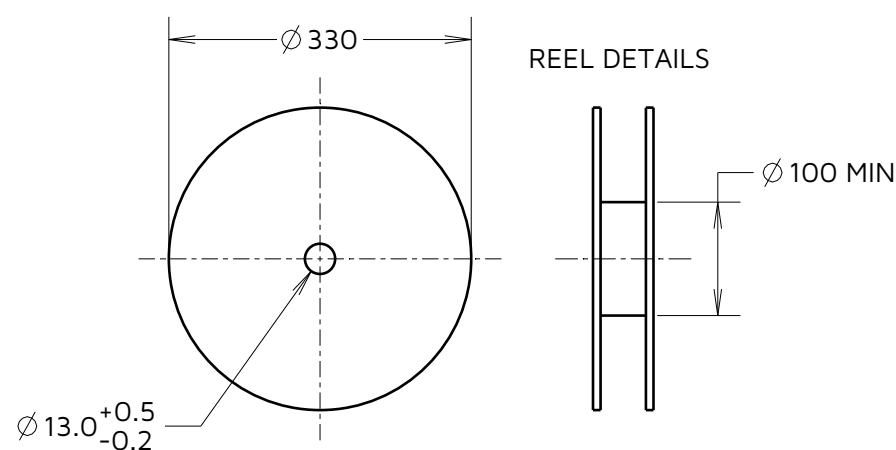
IF IN DOUBT - ASK

©

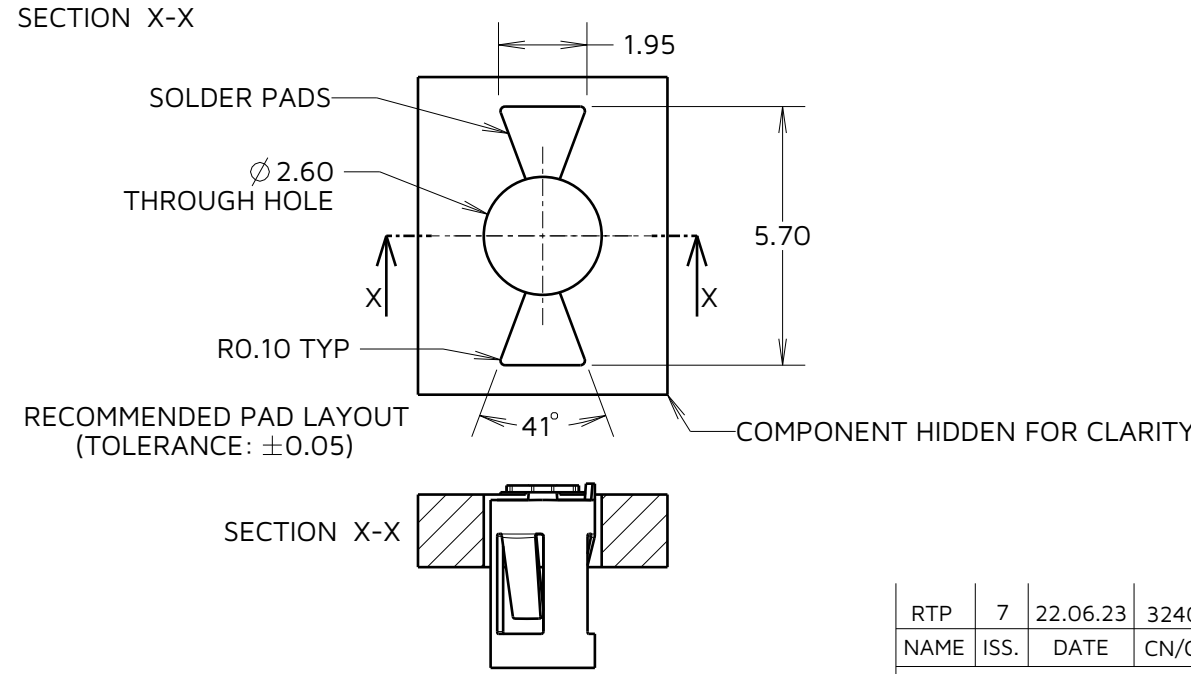
NOT TO SCALE

THIRD ANGLE PROJECTION

ALL DIMENSIONS IN mm



**COMPONENT SPECIFICATION**  
MATERIAL = BERYLLIUM COPPER  
FINISH = 0.10µm - 0.17µm GOLD OVER  
1.0µm MIN NICKEL  
ELECTRICAL:  
CURRENT RATING = 6A  
CONTACT RESISTANCE = 15mΩ MAX  
MECHANICAL:  
MAX INSERTION FORCE:  
Ø 1.50mm PIN = 3.5N  
Ø 1.90mm PIN = 17.0N  
MIN WITHDRAWAL FORCE:  
Ø 1.50mm PIN = 0.5N  
Ø 1.90mm PIN = 1.0N  
DURABILITY = 500 CYCLES  
ENVIRONMENTAL:  
OPERATING TEMPERATURE = -50° C TO +125° C



**NOTES:**  
1. QUANTITY OF COMPONENTS PER REEL = 1400.  
2. THIS PRODUCT IS TAPED AND REELED IN GENERAL ACCORDANCE WITH EIA-481-2 (ELECTRONICS INDUSTRIES ASSOCIATION).

RTP	7	22.06.23	32401
NAME	ISS.	DATE	CN/CO
APPROVED: R.PORTLOCK			
CHECKED: A.BOXALL			
DRAWN: S.BENNETT			
ASSEMBLY DRG:			

**HARWIN**  
www.harwin.com

**TOLERANCES**  
X. = ±1mm  
X.X = ±0.50mm  
X.XX = ±0.20mm  
X.XXX = ±0.01mm  
ANGLES = ±5°  
UNLESS STATED

THIS DRAWING AND ANY INFORMATION OR DESCRIPTIVE MATTER SET OUT HEREON ARE CONFIDENTIAL AND COPYRIGHT PROPERTY OF THE HARWIN GROUP AND MUST NOT BE DISCLOSED, LOANED, COPIED OR USED FOR MANUFACTURING, TENDERING OR FOR ANY OTHER PURPOSE WITHOUT THEIR WRITTEN PERMISSION.

**MATERIAL:**  
SEE ABOVE

**TITLE:** SYCAMORE CONTACT  
Ø 1.50mm TOP ENTRY SOCKET  
IN TAPE & REEL  
**DRAWING NUMBER:** S9111-45R  
SHT 2 OF 2

# Mouser Electronics

Authorized Distributor

Click to View Pricing, Inventory, Delivery & Lifecycle Information:

Harwin:

S9111-45R